

ANNANDALE

FRONT RENDERING

ZURICH
HOMES
exceptional by design



The Annandale is one of our newest English Cottage Designs. At 2,112 sq ft, this home lives large with an open ultra-efficient layout that is ideal for everyday living, as well as entertaining. Its rear Covered Porch is generous in size & convenient to the Kitchen & Dining area. The Master Suite is located in the rear of the home & offers abundant natural light, a large Walk-In-Closet & luxurious Bath. A second Guest Bedroom Suite is located conveniently of the Foyer with a private Bath. The home also features a spacious Bonus / 3rd Bedroom with a full bath and access to abundant storage.

fine homes of architectural integrity and environmental consideration
9 3 1 . 7 8 7 . 1 8 0 0 | www.zurichhomes.com

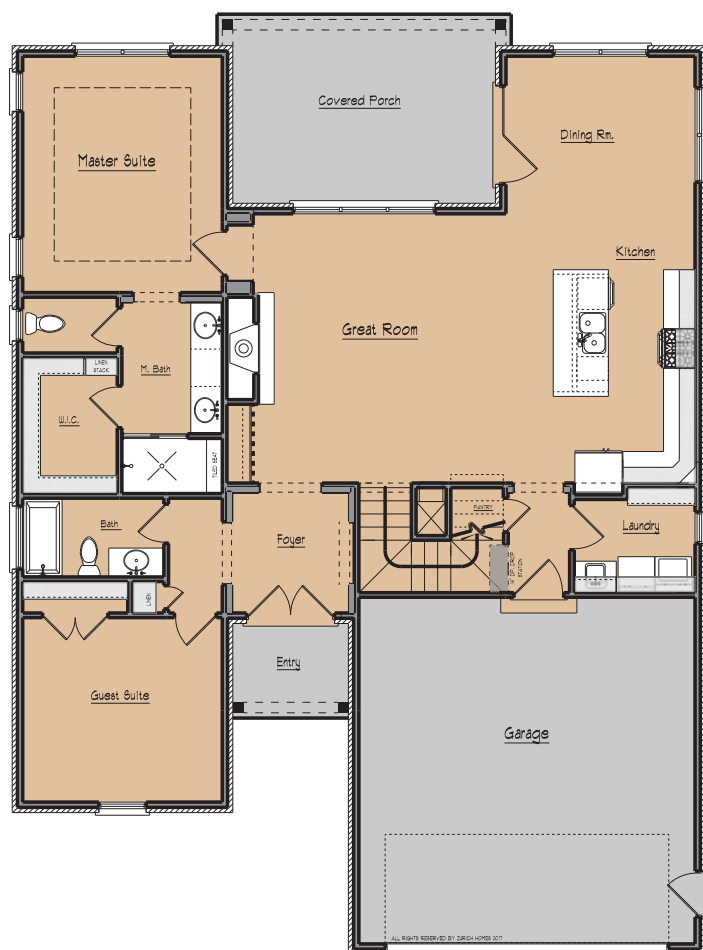


All renderings are artist's impression of the home. The drawings and square-footage notations are approximate and are only to be used for reference. They should not be relied upon as representations, expressed or implied, of the final detail of the residence. © 2017 Zurich Homes

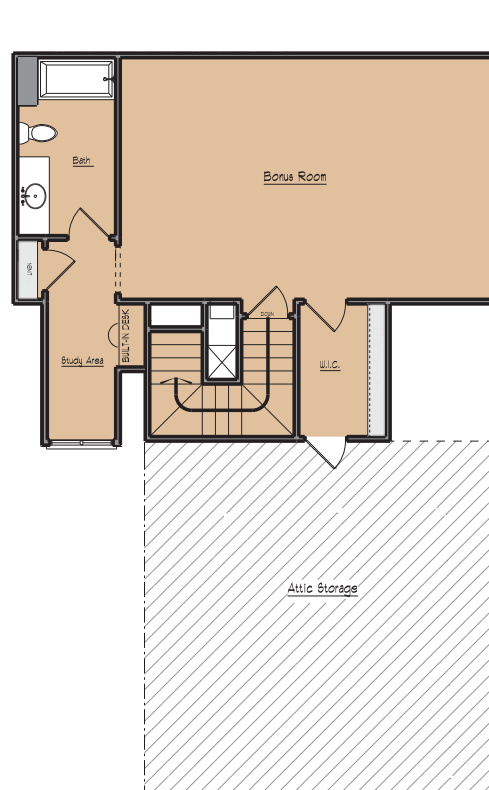
ANNANDALE

FLOOR PLAN

ZURICH
HOMES
exceptional by design



MAIN FLOOR



BONUS ROOM

DETAILS

SQUARE FOOTAGE

total heated: 2,112 sq. ft.

garage: 490 sq. ft.

porches: 260 sq. ft.

OVERALL DIMENSIONS

43 ft. width X 51 ft. depth

ROOM DIMENSIONS

great room: 19 ft. X 17 ft.

kitchen: 9 ft. X 13.5 ft.

dining: 12 ft. X 13.5 ft.

laundry: 7.5 ft. X 6 ft.

garage: 22 ft. X 22 ft.

master suite: 12.5 ft. X 15 ft.

guest suite: 12.5 ft. X 13.5 ft.

bonus room: 23.5 ft. X 15 ft.

study area: 4.5 ft. X 12.5 ft.

fine homes of architectural integrity and environmental consideration
9 3 1 . 7 8 7 . 1 8 0 0 | www.zurichhomes.com



All renderings are artist's impression of the home. The drawings and square-footage notations are approximate and are only to be used for reference. They should not be relied upon as representations, expressed or implied, of the final detail of the residence. © 2017 Zurich Homes