

CANTERBURY

FRONT RENDERING

ZURICH
HOMES
exceptional by design



Designed in the English Tudor style, the Canterbury features steeply pitched front-facing gables, as well as, a prominent chimney with copper chimney pot. Holding true to the Tudor design, an arched entryway leads to an 8-foot tall arched mahogany door. Through the defined Foyer you find a spacious central Living/Kitchen/Dining area that has been designed with flow and entertaining in mind. In addition to the two rear facing Suites, a designer Office with fireplace is located off the Foyer. Additionally, an oversized Garage, Laundry/Mudroom and hidden Pantry are just a few of the features that speak to the quality of this home's design.

fine homes of architectural integrity and environmental consideration
931.787.1800 | www.zurichhomesusa.com

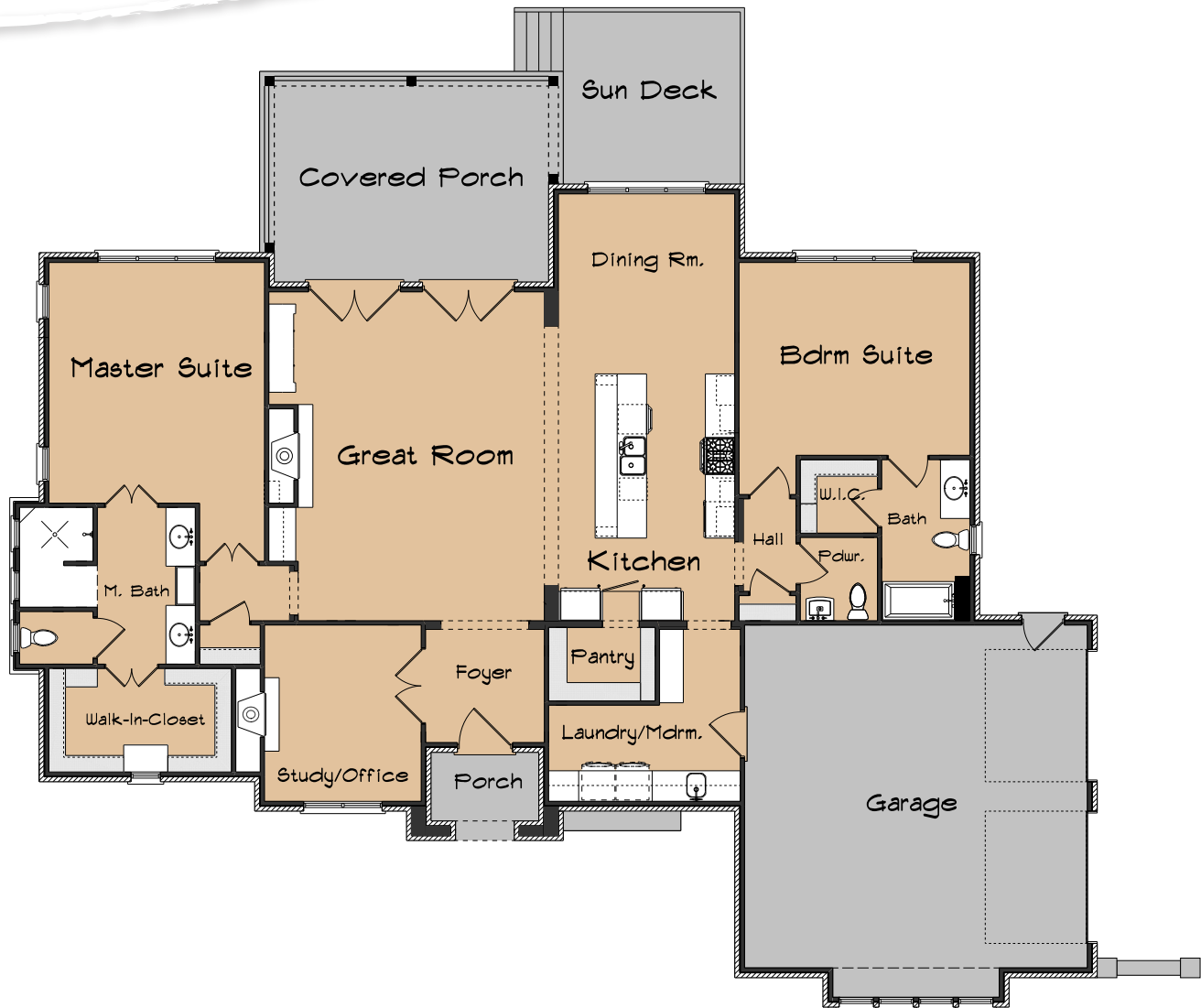


All renderings are artist's impression of the home. The drawings and square-footage notations are approximate and are only to be used for reference. They should not be relied upon as representations, expressed or implied, of the final detail of the residence. © 2016 Zurich Homes

CANTERBURY

FLOOR PLAN

ZURICH
HOMES
exceptional by design



DETAILS

SQUARE FOOTAGE

total heated: 2153 sq. ft.
garage: 590 sq. ft.
porches: 332 sq. ft.

OVERALL DIMENSIONS

73.5 ft. width X 63.5 ft. depth

ROOM DIMENSIONS

great room: 18.5 ft. X 22.5 ft.
kitchen: 12.5 ft. X 16.5 ft.
dining: 12 ft. X 12 ft.
office: 10.5 ft. X 12 ft.

master suite: 14.5 ft. X 16.5 ft.
guest suite: 15.5 ft. X 13 ft.
garage: 24 ft. X 24 ft.

fine homes of architectural integrity and environmental consideration

931.787.1800 | www.zurichhomesusa.com



All renderings are artist's impression of the home. The drawings and square-footage notations are approximate and are only to be used for reference. They should not be relied upon as representations, expressed or implied, of the final detail of the residence. © 2016 Zurich Homes