

CORDOVA

FRONT RENDERING

ZURICH
HOMES
exceptional by design



The Cordova is one of our newest designs. This 1844 sq ft, 2 bedroom, 2.5 bath home features an open, free flowing Kitchen perfect for entertaining. One of the most stunning features of this home is the generous rear outdoor living space with a wood burning fireplace. Situated in the rear of the home, the Master Retreat features a large tile shower, dual vanities and walk in closet. A private Bedroom Suite located in the front of the home is ideal for visiting guests. A large private Study nestled off the living room makes for a perfect quiet escape. Come and make the Cordova your new Zurich Home.

fine homes of architectural integrity and environmental consideration
9 3 1 . 7 8 7 . 1 8 0 0 | www.zurichhomesusa.com



All renderings are artist's impression of the home. The drawings and square-footage notations are approximate and are only to be used for reference. They should not be relied upon as representations, expressed or implied, of the final detail of the residence. © 2013 Zurich Homes

CORDOVA

FLOOR PLANS

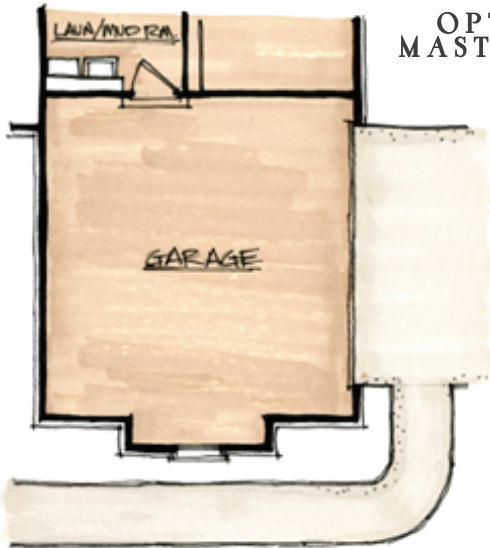
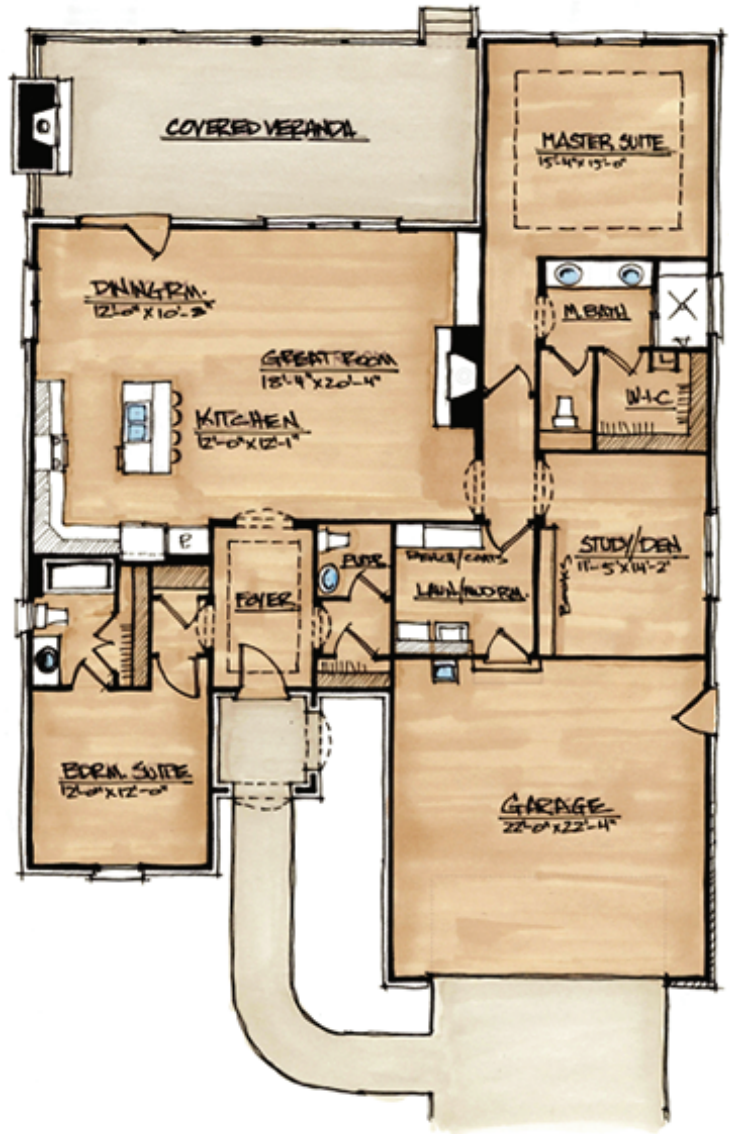
ZURICH
HOMES
exceptional by design



**OPTIONAL
SUN ROOM**
170 sq. ft



**OPTIONAL
MASTER SUITE**



**OPTIONAL
GARAGE**

DETAILS

SQUARE FOOTAGE

total heated: 1844 sq. ft.

garage: 491 sq. ft.

porches: 478 sq. ft.

OVERALL DIMENSIONS

47 ft. width X 66 ft. depth

fine homes of architectural integrity and environmental consideration

9 3 1 . 7 8 7 . 1 8 0 0 | www.zurichhomesusa.com



All renderings are artist's impression of the home. The drawings and square-footage notations are approximate and are only to be used for reference. They should not be relied upon as representations, expressed or implied, of the final detail of the residence. © 2013 Zurich Homes